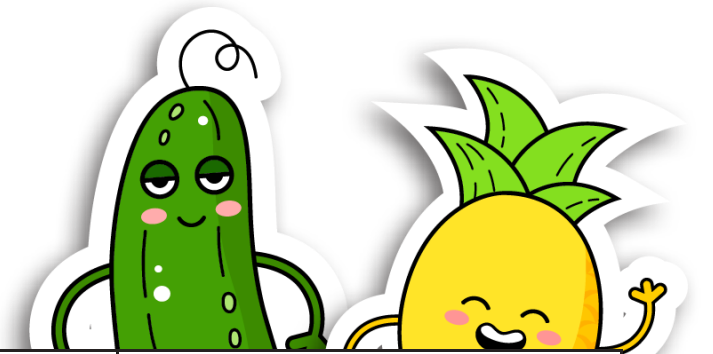
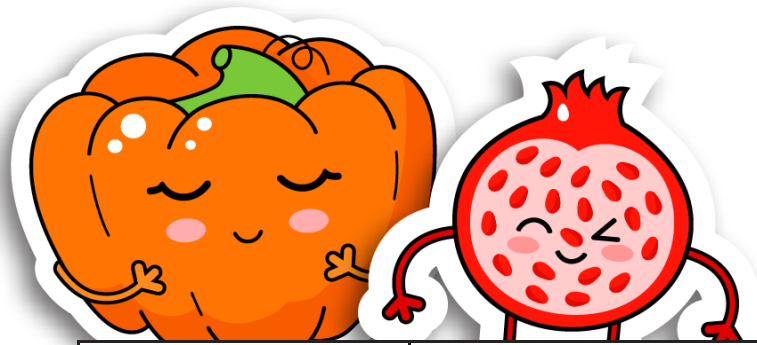


25/26 Winter Menu

W/C Monday 13th April 2026



	Monday	Tuesday	Wednesday	Thursday	Friday
Option 1	French Bread Pizza	Creamy Carbonara Pasta	Roast Chicken	Beef Con Carne	Fish Fillet
Option 2	Cheese & Onion Pastry Roll	Tomato Pasta	Baked Herb Fillet	Veggie Con Carne	Southern Crumb Veggie Burger
On the Side	Baked Beans	Garlic Bread Mixed Salad	Roast Potatoes Seasonal Veg Gravy Yorkshire Pudding	Rice Green Beans	Chips Sweetcorn Peas
Lighter Bite	Tuna Wrap	Cheese Baguette	Roast Chicken in a Baguette	Fish Finger Wrap	Jacket Potato
For Dessert	Ice Lollies	Chocolate Crinkle Cookies	Strawberry Fruit Whip	Lemon Drizzle Cupcake	Fruit Jelly